

EVO[®] Upper Tracker

You need following tools for installation:

- 1 x hydraulic punch.
- Magnetic drill
- 2 x 19mm ring-flat
- 19mm Rocket Ratchet
- 1 x boiler maker square
- 1 x tape measure
- Boiler maker chalk

PLEASE ENSURE THAT YOU ARE WEARING THE NECESSARY PPE BEFORE ATTEMPTING INSTALLATION

STEP 1: Remove idlers from tracker unit to allow easier installation.



STEP 2: Remove wing roller arms and one idler side bracket to allow easier installation. This will allow the unit to be pushed under the belt from the side.

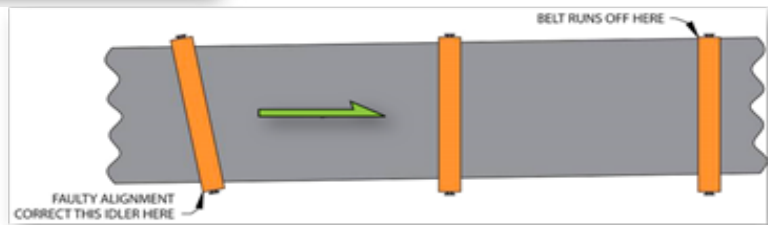
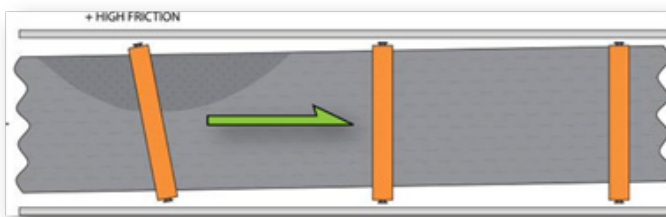


INSTALLATION PROCEDURE

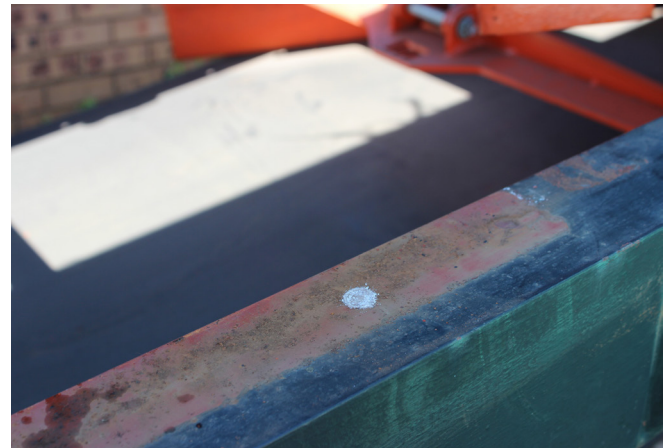
STEP 3: Remove the bracket to allow bolt holes to be marked on structures.



STEP 4: Identify correct position for tracker placement. Points to remember, belt needs sufficient room to turn. Fundamental rule of tracking is the belt will move toward side that has more friction, side that reaches the friction first. Tracking is more affected by components upstream than downstream (where belt has been, rather than where it is going). Mistracking begins upstream, Mistracking visible downstream of problem. Installation of tracking unit should be (4-8 m) upstream of where the problem is visible.



STEP 6: Place the bracket on the structure at the point identified for tracker installation. Ensure that the unit is able to move freely and will not come into contact with structure or other components of the system. Mark the required bolt holes on the structure, ensure that the two brackets are perpendicular to each other.



INSTALLATION PROCEDURE

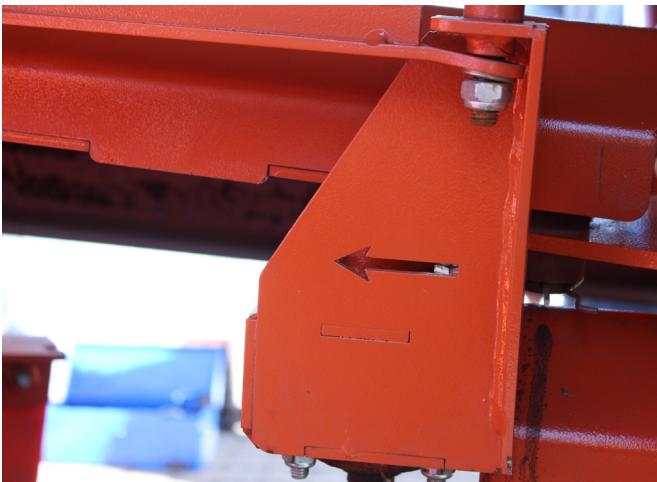
STEP 7: The fixing holes can now be punched or drilled to allow brackets to be fastened.



STEP 8: Manoeuvre the tracker into position by sliding in under the belt.



STEP 9: Please take note of the direction arrow. This arrow must point in the direction of belt travel. The belt must first make contact with the idlers and then the steering arms.



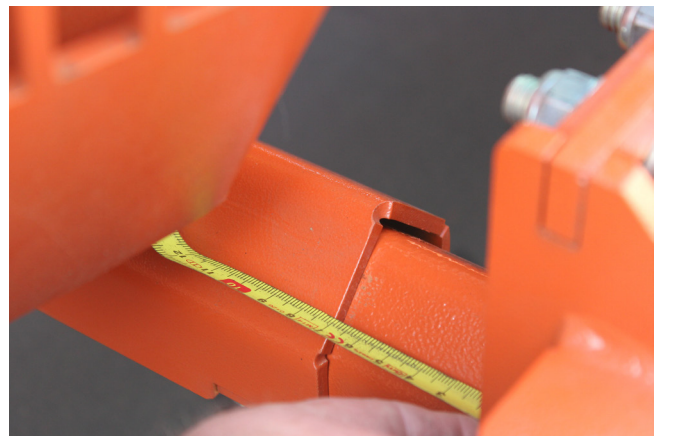
STEP 10: Secure tracker to the brackets that were installed earlier and fasten the bolts and nuts.



STEP 11: The bolts securing the sliding arms of the tracker must now be loosened to allow the tracker to be centered, the tracker must sit in the middle of the stringers and not the belt.



STEP 12: The distance indicated should be the same on both sides of the unit. Once this has been done the bolts on the sliding arm as in Step 11 must be tightened.



INSTALLATION PROCEDURE

STEP 13: The side roller bracket can now be installed, use the correct hole for tracker to conform to the degree of trough of the belt. Tighten all these bolts.



STEP 14: Insert the wing roller arms and raise to adopt the degree of the belt. Do not fasten the bolts completely yet.



STEP 15: Install all of the idlers onto the frame.



STEP 16: Measure the height difference between the top of the center idler and the belt. Remember that the tracker should be elevated between 10mm and 25mm above the surrounding idlers to ensure correct operation and grip. Take the difference measured and add the 10mm. This measurement is how much the unit is to be raised.

STEP 17: The calculation from above is the amount by which the unit is to be raised. Mark the correct bolt hole on the arm and raise accordingly. Insert the bolts and nuts and tighten.



INSTALLATION PROCEDURE

STEP 18: The unit should now make contact with all the idlers



STEP 19: The wing rollers can now be raised to the correct position and adjusted. The rollers should both be approximately 10mm from the belt edge. Once this has been done tighten the bolts and nuts.



Frequently Asked Questions

1. Does the Evo Tracker need greasing? No additional greasing is needed



Martin Engineering RSA
Cnr Antwerpen str & Arnhemsingel
Die Heuwel, Witbank, Emalahleni
Tel +27 13 656 5135
Fax +27 13 656 5129
www.martin-eng.co.za

Subject to change without prior notice.
Quality Management System Certified by
DNV - ISO 9001
This technology is protected by US Patent
No. 8.8888.888

QUALITY MANAGEMENT SYSTEM
CERTIFIED BY DNV
== **ISO 9001:2008** ==

Problem Solved™ GUARANTEED!

Form No. M4027-ZA
© Martin Engineering Company 2014